

# Countryside Christian Community

---

200 Bellann Court, Annville, PA 17003-9012

717-867-4636

[www.countrysidechristian.info](http://www.countrysidechristian.info)

## **Assisted Living (Personal Care)**

Countryside Christian Community offers personal care services, commonly known as assisted living in private accommodations. Services include daily assistance with activities of daily living (dressing, bathing, grooming, etc.) to the extent needed, three balanced meals, and supervision of other medical needs. Residents accepted for assisted living at Countryside Christian Community are offered priority admission to nursing care if those services are needed in the future for a temporary or on-going basis. Continued residency in assisted living is possible as long as the resident is physically and mentally capable of exiting the building with minimal assistance in the event of an emergency and is not in need of the services of a long-term care facility.

Standard and large size single rooms, each with a half bath, are available. Suites offer a living area, kitchenette, bedroom and half bath. Residents may bring their own furnishings and personal items to create their own home-like atmosphere. Living at Countryside Christian Community can be independent or participative . . . the choice is yours. You may choose to participate in the social, recreational, and spiritual life of the campus community or, continue to participate in local community activities to the greatest extent possible. Housekeeping and laundry services are provided as well as a host of recreational and social programs open to all residents. Regular off-campus shopping trips and other excursions enrich the life of residents not having easy access to transportation.

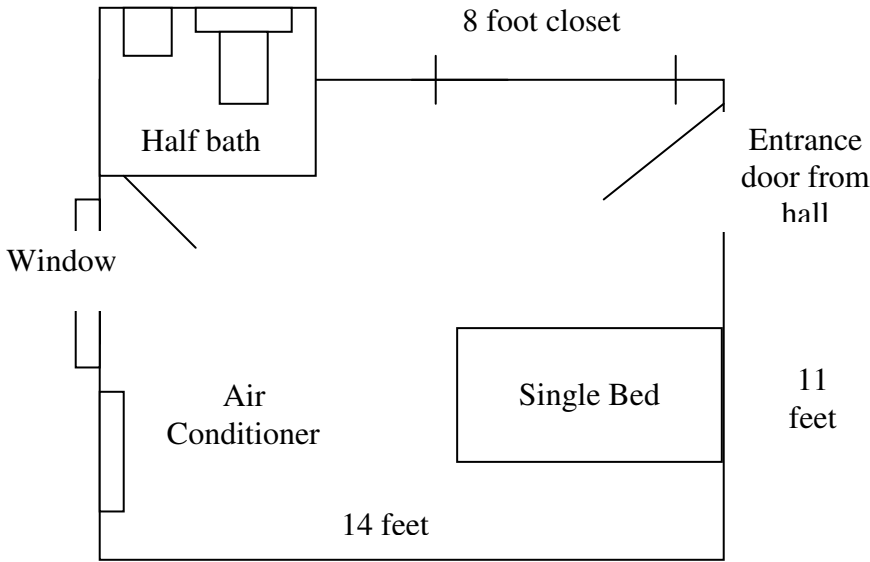
All rooms include individual control of heating and air conditioning and a private half bath. A central bathing suite with whirlpool offers a private space for enjoyable and relaxing bathing with staff assistance. The campus includes an attractive living room, chapel, multipurpose area, and dining room which are used for recreational, social, spiritual, and educational programs. Numerous outside groups provide entertainment, spiritual, or musical programs. Most of these events are open to all residents and families illustrating the small family atmosphere evident among residents and staff at Countryside Christian Community.

*Countryside Christian Community, a ministry of the United Christian Church, is committed to serving older adults according to the Biblical responsibility found in Matthew 25:40. Services are provided to all residents without regard to age, race, color, national origin, ancestry, physical handicap or disability.*

## **Residency Application**

Persons interested in residency are required to complete an application form and tour the community. Acceptance for residency is based upon the ability of CCC to meet your medical and service needs and your ability to cover the cost of those needed services. Certain financial qualifications apply which are determined by age and expected length of stay. Though immediate occupancy is not always possible, we do utilize waiting lists that allow chronological priority based on the date of acceptance of your application. A non-refundable application fee of \$30 applies to the Standard Waiting List and a deposit of \$2,000 applies to the Priority Waiting List.

**Countryside Christian Community – Assisted Living Single Room Plan:**  
200 Bellann Court, Annville, PA 17003 717-867-4636 www.countrysidechristian.info



**Assisted Living Suite Plan:**

